

# ATLAS

SINCE 1919

**STABLE.  
STRONG.  
STEADY.**

-  23 - 25 t
-  129 kW (175 hp)
-  10.25 - 12.65 m



MADE  
IN  
GERMANY

## **MATERIAL HANDLING MACHINE 250MH**

[WWW.ATLASGMBH.COM](http://WWW.ATLASGMBH.COM)

# TECHNICAL SPECIFICATION 250MH

## Technical Specification

### ENGINE

Power according to ISO 9249.....129 kW (175 HP)	Cylinder capacity.....6700 cm <sup>3</sup>	Air filter .....Dry air filter
RPM.....1800/min	Number of cylinders.....6	Battery.....2 x 12V / 100 Ah
Make.....Cummins QSB 6.7 (Tier 4F)	Borehole/lift.....101/126	Alternator .....24 V / 70 A
Design.....Turbocharger / intercooler	Cooling system.....Water-cooled	Starter.....24 V / 3.2 kW

### HYDRAULIC SYSTEM

• Load limit-controlled high-performance piston pump	• Suction valves for all work functions	• 2 additional circuits for additional consumer loads possible
• 7 standard consumer loads in one control block	• Load-retaining and fine-drop valve in lifting circuit	• Max. oil flow.....380 l/min
• Sensitive, proportional, independent control	• Pump flow control	• Max. operating pressure.....340 (370) bar
• Primary and secondary protection against overload	• Grab and grab-rotating function	• <b>Operating modes:</b> 3 pre-programmed modes (Fine, Eco, Power)
	• Pipe-break protection valves for lifting cylinders	• Proportional grab turning

### SWING ASSEMBLY

• Swing motor:	Axial piston motor with priority valve	• Max. swing speed.....11/min
• Swing gear:	Planetary transmission	• Swing torque.....63.2 kNm
• Swing brakes:	Automatic multidisc brake	

### TRACTION DRIVE AND BRAKES

• Variable displacement motor	• Maximum speed .....20 km/h	• Max. gradeability .....55%
• Power-shift transmission	• Terrain speed .....5 km/h	• Dual circuit brake system .....Multi-disc
• Double-acting brake valve	• Crawling speed .....1 km/h	• Parking brake .....Multi-disc
• Driving direction pre-selection via switch in joystick	• Tractive force .....91.8 kN	

### UNDERCARRIAGE

• 40 t special excavator axles	• Steering axle with automatic oscillating axle blocking	• 8 tyres .....16 PR 10.00 - 20
--------------------------------	--	---------------------------------

### FILL CAPACITIES

• Fuel tank .....382 liters	• Engine oil .....20 liters	• Hydraulics system.....400 liters
• Cooling system .....42 liters	• Hydraulic tank .....224 liters	• AdBlue® tank.....18.9 liters

### DRIVER'S CAB

• Meets latest safety standards	<b>CONTROL:</b>	<b>CLIMATE CONTROL:</b>
• Extra large entry zone	• Ergonomic joysticks	• Air conditioning with Climatronic
• Spacious leg room	• Slim steering column, height and tilt adjustable	• Very good air distribution through optimally arranged nozzles
• Excellent circumferential visibility	• Clear and concise arrangement of control switches	
• Preparation for radio installation with mute function		<b>SOUND LEVELS:</b>
<b>DRIVER'S SEAT:</b>	<b>MONITORING:</b>	• ISO6396 (L <sub>p</sub> A) in driver's cab .....73 dB(A)
• Air-cushioned comfort seat (optional seat heating)	• Operating data display screen	• 2000/14EG (L <sub>w</sub> A) ambience level .....101 dB(A)
• Arm rests and lumbar support	• Automatic system for monitoring, warning and storage of data	
• Seat adjustable separately from console		

# WORKING EQUIPMENT 250MH

## Working Equipment

### OPERATING HEIGHTS

	LOADING BOOM 6.20 m (C24.5i)	LOADING BOOM 6.20 m (C24.5i)	LOADING BOOM 6.80 m (C24.6i)	ADJUSTABLE BOOM
				Base arm 1.95 m (C21.41) Boom 3.83 m (C21.461)
	Stick 4.80 m (D21.15i)	Stick 4.80 m (D21.15is)	Stick 5.30 m (D21.16i)	Stick 2.65 m (D21.33)
DB / outriggers	23 t	23 t	23.4 t	23.5 t
4 outriggers	23.2 t	23.2 t	23.6 t	23.7 t

Operating weight with driver, solid rubber tyres, completely filled implement and 1.0 t for attachments and 1.4 t for lift-cab (option)

### EQUIPMENT

#### BASIC DEVICE ATLAS 250MH

- 250MH material handler with DB\* on steering axle, double outrigger support on steering axle and 2 lifting cylinders (A25.35)
- 250MH material handler with quadruple outrigger support and 2 lifting cylinders (A25.39)

\*DB - Dozer blade

#### Standard equipment:

#### Engine:

- Automatic idle
- Diesel pre-filter
- Engine monitoring

- Rear view security camera with 5" LCD-colour monitor

- Seat adjustable separately from console

- Heat-absorbing glass, tinted windows
- Automotive drive and cruise control

- Operating data screen display
- Ready for electric cooling box

- Different options for storage, compartment for documents

- Bottle holder

#### Mono Booms:

- Loading boom 6.20 m (C24.5i)
- Loading boom 6.80 m (C24.6i)

#### Hydraulics:

- Grab and grab-rotating function
- Accumulator for emergency lowering of the arm system
- Pipe break protection valves for lifting cylinders
- Overload warning device
- Cylinder end-position damping

#### Equipment:

- Combined lubricating points for swing bearing and arm equipment

#### Mono Sticks:

- Stick 4.80 m (D21.15is)
- Stick 4.80 m (D21.15i)
- Stick 5.30 m (D21.16i)

#### Undercarriage:

- Power-shift transmission
- Wet disc brakes
- Tool box in the undercarriage

#### Adjustable boom:

- Base arm 1.95 m (C21.41)
- Boom 3.41 m (C21.46)
- Boom 3.83 m (C21.461)
- Stick 2.65 m (D21.33)

#### Cab:

- Air-conditioning
- Preparation for radio installation with mute function
- Slim steering column, height and tilt adjustable

### ADDITIONAL EQUIPMENT

#### Engine:

- Refueling pump
- Auxiliary heating
- Cold startup assistance

#### Equipment:

- Automatically controlled and monitored electric central lubrication system

- Lift-Cab (to 2.50 m drive up)

- Cab elevation 1.2 m /0.6 m

- Electric cooling box

- Working lights, LED

#### Cab:

- Cab protection guard

- Beacon light

- Heated driver's seat

- GPS/GSM telemetric system for monitoring of operating data, consumption, position

- Radio/CD/MP3, front AUX in, USB

#### Undercarriage:

- Vollgummireifen

Other special equipment: see price list

### ATTACHMENTS

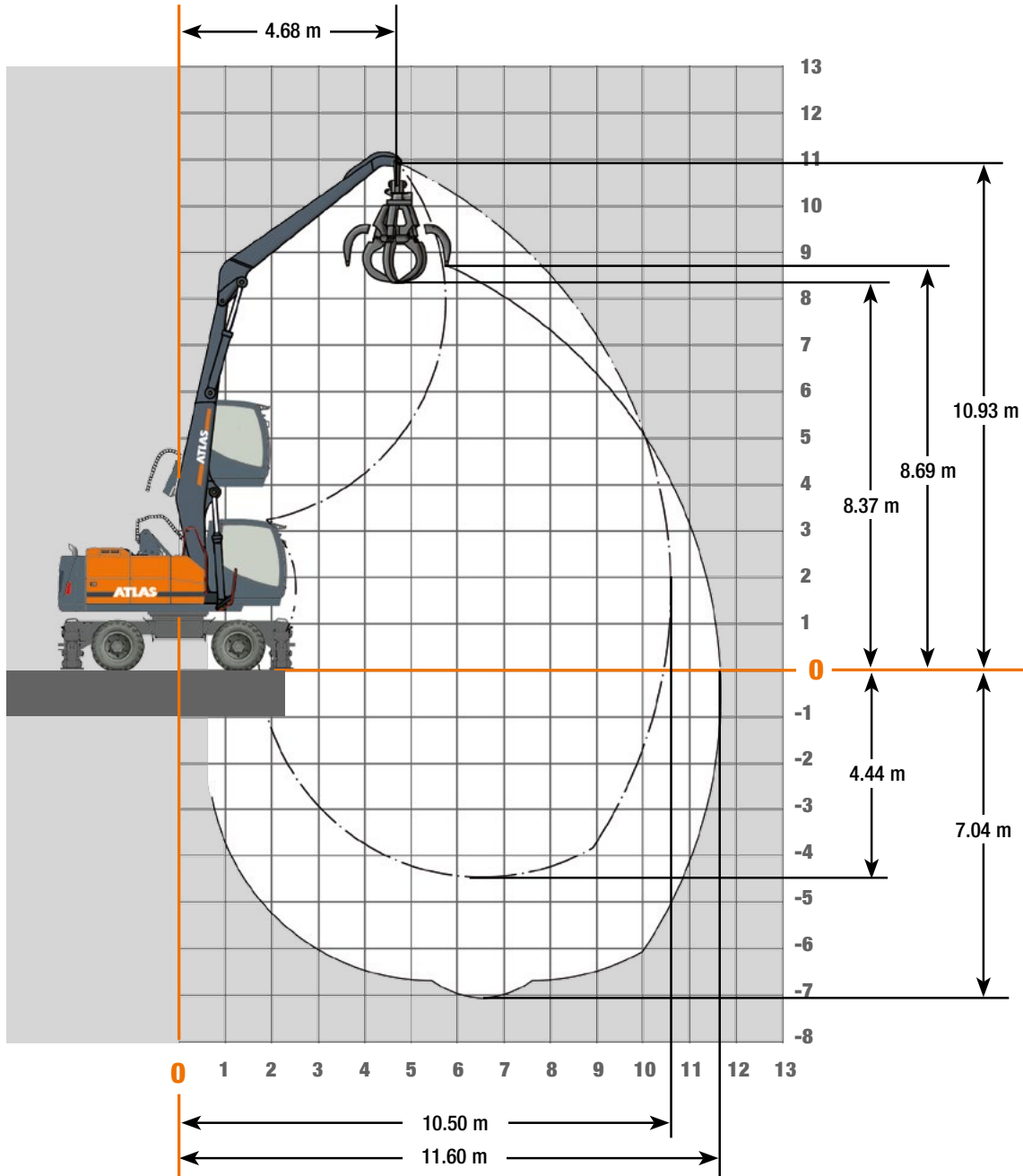
- Clamshell grab
- Orange peel grab

- Load hook
- Load lifting magnet

- Log grab

# WORKING RANGES 250MH

**Working ranges** Loading boom 6.20 m (C24.5i) and stick 4.80 m (D21.15i)



# LIFTING CAPACITIES 250MH

## Lifting Capacities Loading boom 6.20 m (C24.5i) and Stick 4.80 m (D21.15i)

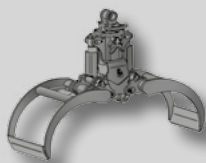
Lifting Capacities Loading boom 6.20 m (C24.5i) with stick 4.80 m (D21.15i). Max. reach 11.60 m											
HEIGHT		3.0 m		4.5 m		6.0 m		7.5 m		9.0 m	
		FRONT	LATERAL	FRONT	LATERAL	FRONT	LATERAL	FRONT	LATERAL	FRONT	LATERAL
9.0 m	Outriggers lowered					6.2*	6.2*	5.4*	5.4*		
	Outriggers raised					5.7	4.7	3.9	3.3		
7.5 m	Outriggers lowered					6.1*	6.1*	5.4*	5.4*	4.7*	4.2
	Outriggers raised					5.7	4.7	4	3.3	3	2.4
6.0 m	Outriggers lowered					6.3*	6.3*	5.4*	5.4*	4.7*	4.2
	Outriggers raised					5.6	4.6	4	3.3	3	2.4
4.5 m	Outriggers lowered			8.4*	8.4*	6.7*	6.7*	5.6*	5.5	4.8*	4.2
	Outriggers raised			8.4*	6.9	5.4	4.4	3.9	3.2	2.9	2.4
3.0 m	Outriggers lowered	14.7*	14.7*	9.6*	9.6*	7.2*	7.2*	5.8*	5.4	4.8*	4.1
	Outriggers raised	14.7*	11.8	7.9	6.3	5.2	4.2	3.7	3	2.8	2.3
1.5 m	Outriggers lowered	2.8*	2.8*	10.4*	10.4*	7.5*	7.3	5.8*	5.2	4.7*	4
	Outriggers raised	2.8*	2.8*	7.3	5.8	4.9	3.9	3.6	2.9	2.8	2.3
0 m	Outriggers lowered			10*	10*	7.3*	7	5.6*	5.1	4.4*	3.9
	Outriggers raised			6.9	5.4	4.7	3.7	3.5	2.8	2.7	2.2
- 1.5 m	Outriggers lowered			8.6*	8.6*	6.6*	6.6*	5*	5	3.8*	3.8*
	Outriggers raised			6.8	5.3	4.6	3.6	3.4	2.7	2.7	2.1
- 3.0 m	Outriggers lowered			6.5*	6.5*	5.2*	5.2*	4*	4*	2.8*	2.8*
	Outriggers raised			6.5*	5.3	4.5	3.6	3.4	2.7	2.7	2.2

The specified max. loading capacities in tonnes include a stability of 33% or are calculated at 87% of the hydraulic lifting power, as per ISO10567. These values are applicable at the tip of the arm (without Bucket tipping cylinder, system of redirect levers) with optimum positioning of the corresponding arm system and with the pressure switched on. Weights of attached load carrying accessories (grab, magnet, load hook, etc.) are not included with the load carrying values. \* Value limited due to hydraulics.

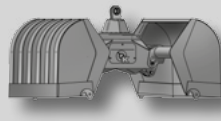
### Attachments



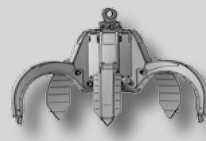
Load hook



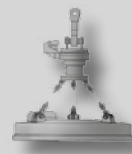
Log grab



Clamshell grab



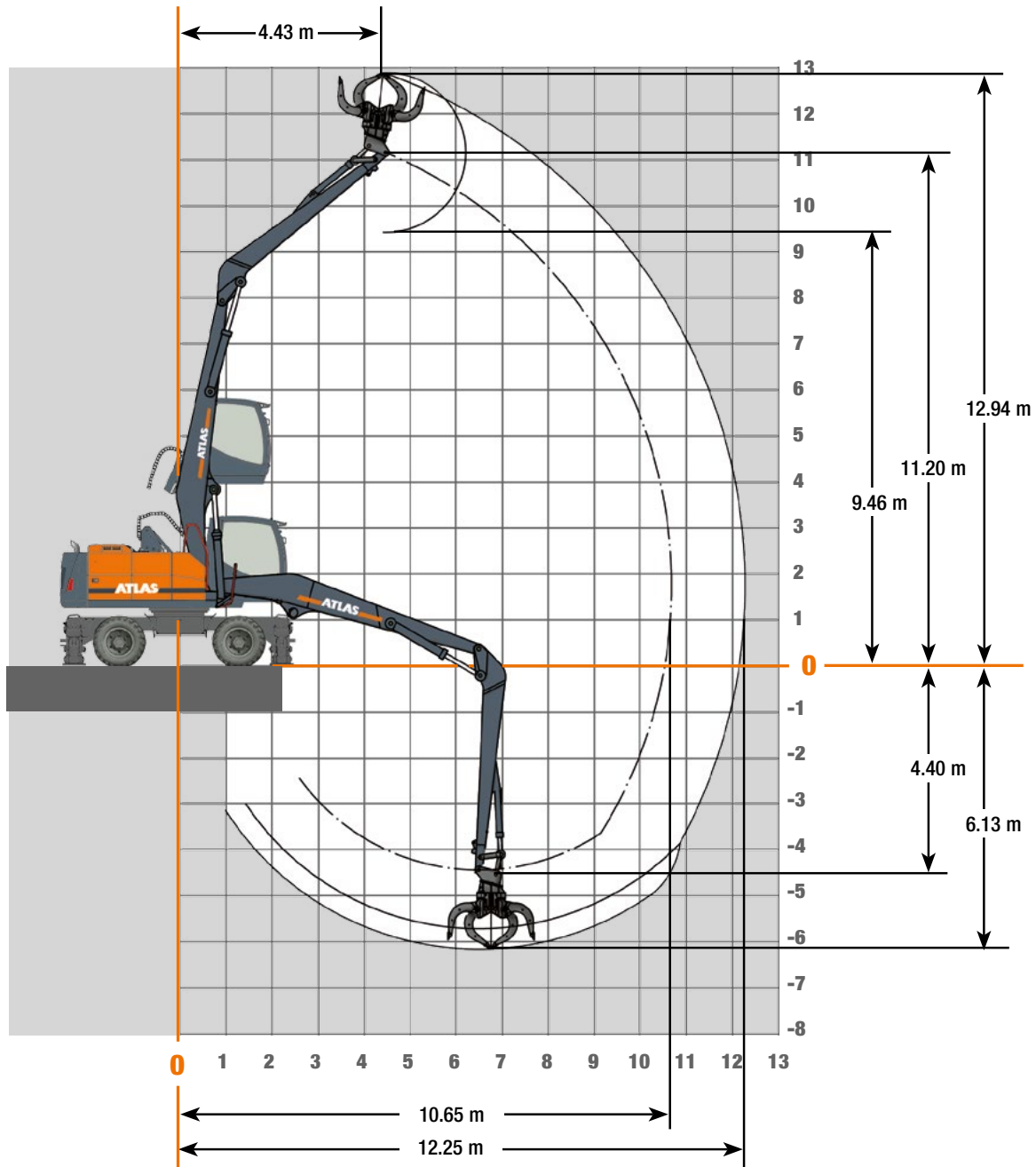
Orange peel grab



Load lifting magnet

# WORKING RANGES 250MH

**Working ranges** Loading boom 6.20 m (C24.5i) and Stick 4.80 m (D21.15is)



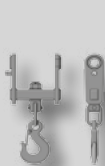
# LIFTING CAPACITIES 250MH

## Lifting Capacities Loading boom 6.20 m (C24.5i) and Stick 4.80 m (D21.15is)

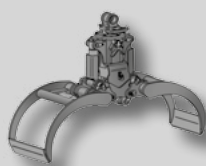
Lifting Capacities Loading boom 6.20 m (C24.5i) with stick 4.80 m (D21.15is). Max. reach 12.30 m											
HEIGHT		3.0 m		4.5 m		6.0 m		7.5 m		9.0 m	
		FRONT	LATERAL	FRONT	LATERAL	FRONT	LATERAL	FRONT	LATERAL	FRONT	LATERAL
12.0 m	Outriggers lowered										
	Outriggers raised										
10.5 m	Outriggers lowered										
	Outriggers raised										
9.0 m	Outriggers lowered					6.2*	6.2*	5.4*	5.4*		
	Outriggers raised					5.6	4.7	3.9	3.3		
7.5 m	Outriggers lowered					6.1*	6.1*	5.4*	5.4*	4.7*	4.2
	Outriggers raised					5.7	4.7	4	3.3	3	2.4
6.0 m	Outriggers lowered					6.3*	6.3*	5.4*	5.4*	4.7*	4.2
	Outriggers raised					5.6	4.6	4	3.3	3	2.4
4.5 m	Outriggers lowered			8.4*	8.4*	6.7*	6.7*	5.6*	5.5	4.8*	4.2
	Outriggers raised			8.4*	6.9	5.4	4.4	3.9	3.1	2.4	3
3.0 m	Outriggers lowered	14.8*	14.8*	9.6*	9.6*	7.2*	7.2*	5.8*	5.4	4.8*	4.1
	Outriggers raised	14.8*	11.8	7.9	6.4	5.2	4.2	3.7	3	2.8	2.3
1.5 m	Outriggers lowered	2.9*	2.9*	10.4*	10.4*	7.5*	7.3	5.9*	5.2	4.7*	4
	Outriggers raised	2.9*	2.9*	7.4	5.8	4.9	3.9	3.6	2.9	2.8	2.2
0 m	Outriggers lowered			10*	10*	7.4*	7.1	5.7*	5.1	4.4*	4
	Outriggers raised			7	5.5	4.7	3.7	3.5	2.8	2.7	2.2
- 1.5 m	Outriggers lowered			8.7*	8.7*	6.6*	6.6*	5.1*	5	3.8*	3.8*
	Outriggers raised			6.8	5.3	4.6	3.7	3.4	2.8	2.1	2.7
- 3.0 m	Outriggers lowered			6.5*	6.5*	5.2*	5.2*	4*	4*	2.8*	2.8*
	Outriggers raised			6.5*	5.3	4.6	3.6	3.4	2.7	2.7	2.2
- 4.5 m	Outriggers lowered										
	Outriggers raised										

The specified max. loading capacities in tonnes include a stability of 33% or are calculated at 87% of the hydraulic lifting power, as per ISO10567. These values are applicable at the tip of the arm (without Bucket tipping cylinder, system of redirect levers) with optimum positioning of the corresponding arm system and with the pressure switched on. Weights of attached load carrying accessories (grab, magnet, load hook, etc.) are not included with the load carrying values. \* Value limited due to hydraulics.

### Attachments



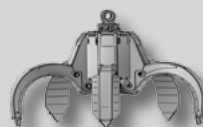
Load hook



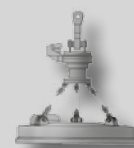
Log grab



Clamshell grab



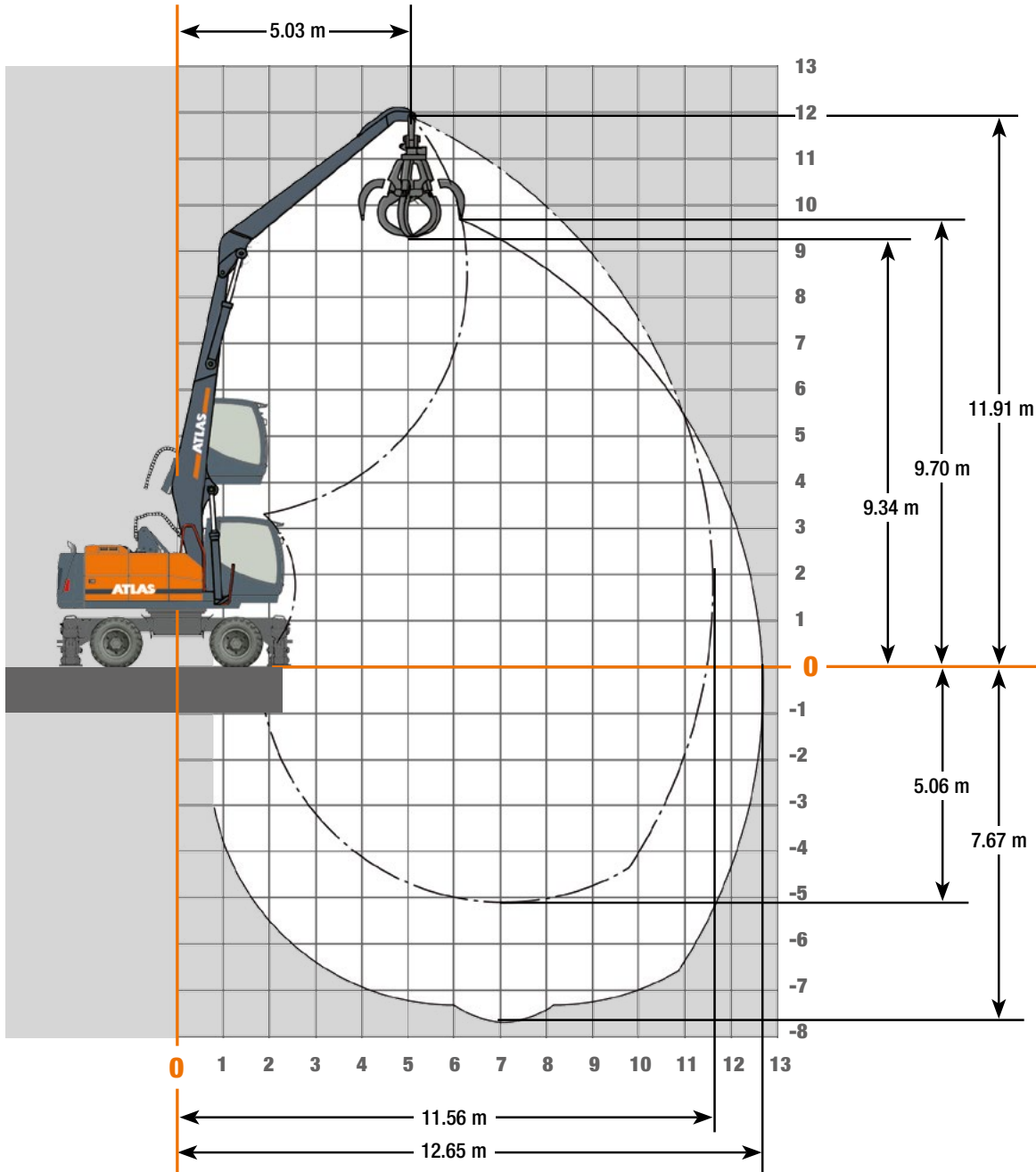
Orange peel grab



Load lifting magnet

# WORKING RANGES 250MH

**Working ranges** Loading boom 6.80 m (C24.6i) and Stick 5.30 m (D21.16i)





# LIFTING CAPACITIES 250MH

## Lifting Capacities Loading boom 6.80 m (C24.6i) and Stick 5.30 m (D21.16i)

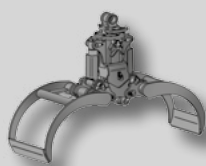
Lifting Capacities Loading boom 6.80 m (C24.6i) with stick 5.30 m (D21.16i). Max. reach 12.65 m													
HEIGHT		3.0 m		4.5 m		6.0 m		7.5 m		9.0 m		10.5 m	
		FRONT	LATERAL	FRONT	LATERAL	FRONT	LATERAL	FRONT	LATERAL	FRONT	LATERAL	FRONT	LATERAL
12.0 m	Outriggers lowered												
	Outriggers raised												
10.5 m	Outriggers lowered					5.9*	5.9*						
	Outriggers raised					5.7	4.7						
9.0 m	Outriggers lowered							5*	5*				
	Outriggers raised							4	3.3				
7.5 m	Outriggers lowered							5*	5*	4.4*	4.3		
	Outriggers raised							4	3.3	3	2.5		
6.0 m	Outriggers lowered					6*	6*	5.2*	5.2*	4.5*	4.2	3.9*	3.3
	Outriggers raised					5.6	4.6	4	3.3	3	2.4	2.3	1.9
4.5 m	Outriggers lowered			8.2*	8.2*	6.5*	6.5*	5.4*	5.4*	4.6*	4.2	3.9*	3.3
	Outriggers raised			8.2*	6.9	5.4	4.4	3.8	3.2	2.9	2.4	2.3	1.8
3.0 m	Outriggers lowered	14.7*	14.7*	9.4*	9.4*	7*	7*	5.6*	5.3	4.6*	4	3.9*	3.2
	Outriggers raised	14.7*	11.6	7.9	6.3	5.1	4.1	3.7	3	2.8	2.3	2.2	1.8
1.5 m	Outriggers lowered			10.1*	10.1*	7.3*	7.2	5.7*	5.1	4.6*	3.9	3.8*	3.2
	Outriggers raised			7.2	5.6	4.8	3.8	3.5	2.8	2.7	2.2	2.2	1.7
0 m	Outriggers lowered			9.8*	9.8*	7.2*	6.9	5.6*	5	4.4*	3.9	3.5*	3.1
	Outriggers raised			6.7	5.2	4.5	3.6	3.4	2.7	2.6	2	2.1	1.7
-1.5 m	Outriggers lowered			8.5*	8.5*	6.5*	6.5*	5*	4.9	4*	3.9		
	Outriggers raised			6.6	5	4.4	3.5	3.3	2.6	2.6	2		
-3.0 m	Outriggers lowered			6.6*	6.6*	5.4*	5.4*	4.2*	4.2*	3.2*	3.2*		
	Outriggers raised			6.5	5	4.3	3.4	3.2	2.6	2.5	2		
-4.5 m	Outriggers lowered					3.7*	3.7*	3*	3*	2*	2*		
	Outriggers raised					3.7*	3.4	3*	2.6	2*	2		

The specified max. loading capacities in tonnes include a stability of 33% or are calculated at 87% of the hydraulic lifting power, as per ISO10567. These values are applicable at the tip of the arm (without Bucket tipping cylinder, system of redirect levers) with optimum positioning of the corresponding arm system and with the pressure switched on. Weights of attached load carrying accessories (grab, magnet, load hook, etc.) are not included with the load carrying values. \* Value limited due to hydraulics.

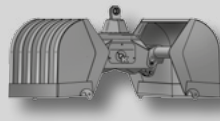
### Attachments



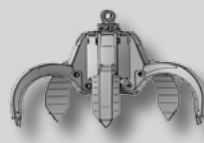
Load hook



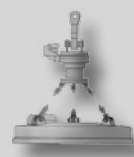
Log grab



Clamshell grab



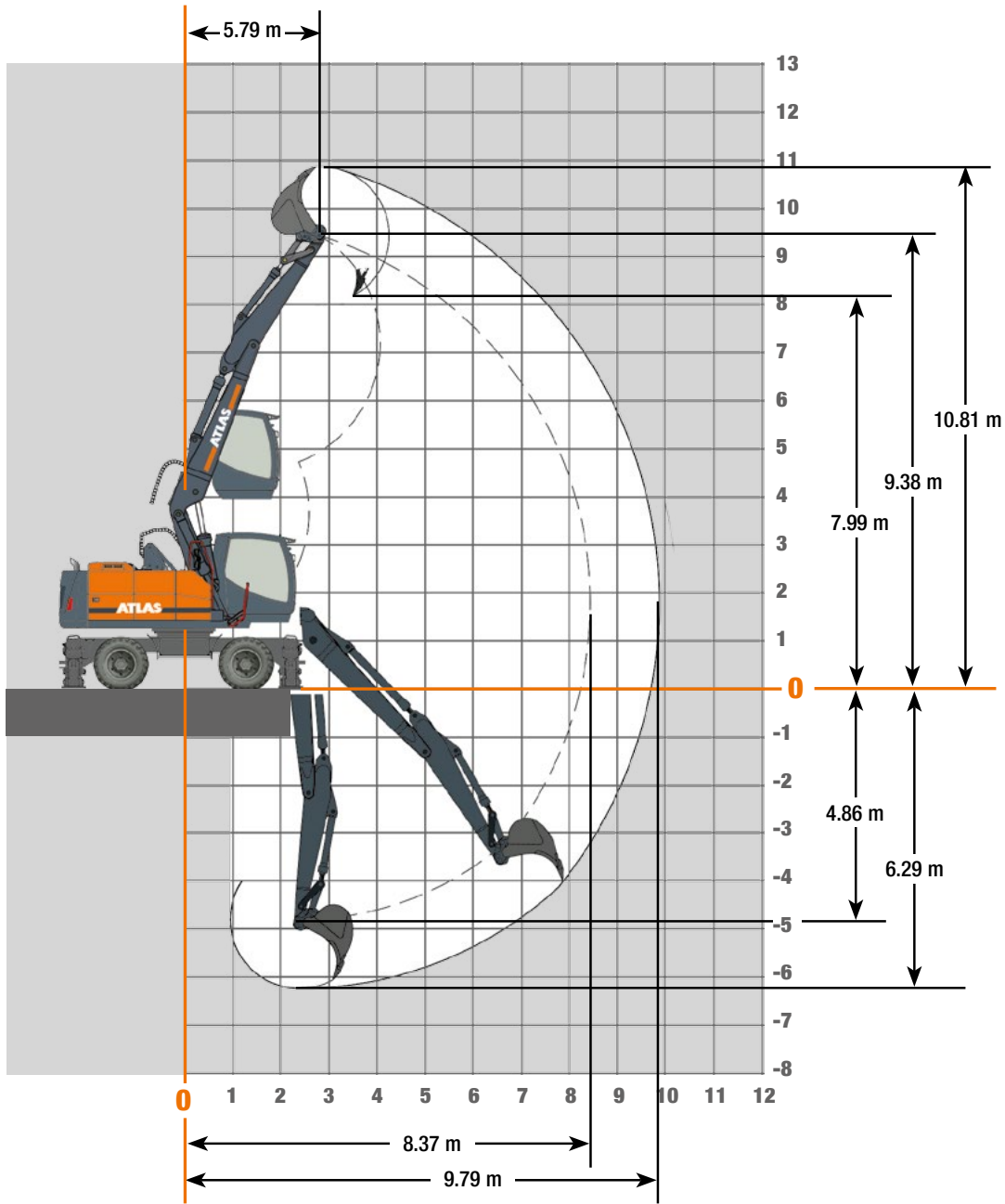
Orange peel grab



Load lifting magnet

# WORKING RANGES 250MH





















**Working ranges** Adjustable boom: Base arm 1.95 m (C21.41) and boom 3.83 m (C21.461) with stick 2.65 m (D21.33)



# LIFTING CAPACITIES 250MH

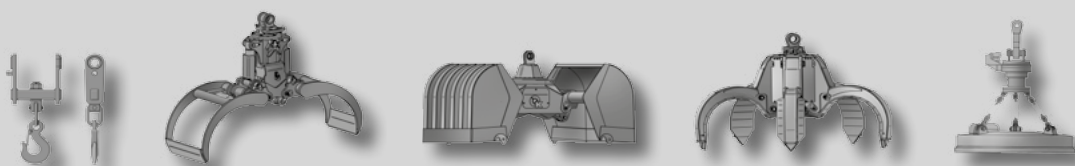
## Lifting Capacities Adjustable boom: Base arm 1.95 m (C21.41) and boom 3.83 m (C21.461) with stick 2.65 m (D21.33)

Lifting Capacities Adjustable boom: Base arm 1.95 m (C21.41) and boom 3.83 m (C21.461) with stick 2.65 m (D21.33). Max reach 9.79 m

Height	Undercarriage type		3.0 m	3.5 m	4.0 m	4.5 m	5.0 m	5.5 m	6.0 m	6.5 m	7.0 m	7.5 m	8.0 m
+ 9.0 m	FRONT 	SDB supported		6869									
		SDB raised		6869									
	LATERAL 	SDB supported		6869									
		SDB raised		6869									
+ 7.5 m	FRONT 	SDB supported				5413	5420	5470	4090				
		SDB raised				5413	5420	5470	4090				
	LATERAL 	SDB supported				5413	5420	5470	4090				
		SDB raised				5413	5420	5187*	4090				
+ 6.0 m	FRONT 	SDB supported			5733	5587	5461	5358	5281	5240	4972		
		SDB raised			5733	5587	5461	5358	5281	4911*	4332*		
	LATERAL 	SDB supported			5733	5587	5461	5358	5281	5240	4972		
		SDB raised			5733	5587	5461	5201*	4597*	4066*	3558*		
+ 4.5 m	FRONT 	SDB supported	8632	7957	7233	6695	6281	5956	5698	5494	5337	5231	
		SDB raised	8632	7957	7233	6695	6281	5956	5441*	4871*	4402	3900*	
	LATERAL 	SDB supported	8632	7957	7233	6695	6281	5956	5698	5494	5337	5231	
		SDB raised	8632	7957	7233	6695	5817*	5111*	4545*	4086*	3633*	3203*	
+ 3.0 m	FRONT 	SDB supported	8540	9515	9611	8403	7547	6910	6420	6034	5725	5466	5260
		SDB raised	8540	9515	9358*	7918*	6839	6009	5354*	4818*	4383	3894*	3471
	LATERAL 	SDB supported	8540	9515	9611	8403	7547	6910	6420	6034	5725	5462*	4970*
		SDB raised	8540	9188*	7637	6525*	5674*	5013*	4480*	4050*	3623*	3201*	2839*
+ 1.5 m	FRONT 	SDB supported	11468	11439	11078	9854	8685	7804	7120	6577	6135	5753	5446
		SDB raised	11468	11221	9210*	7799*	6751*	5949*	5313	4809*	4309*	3827*	3422*
	LATERAL 	SDB supported	11468	11439	11078	9854	8685	7804	7120	6577	5956*	5449	4918*
		SDB raised	11303	9028*	7510*	6422*	5605*	4965*	4458*	4032*	3544*	3137*	2792*
+ 0 m	FRONT 	SDB supported	14157	13121	11822	10349	9186	8252	7495	6870	6343	5894	5470
		SDB raised	14157	11290*	9238*	7816*	6776*	5987	5388*	4714*	4171*	3721*	3348*
	LATERAL 	SDB supported	14157	13121	11822	10349	9186	8244	7328*	6589	6004	5372*	4843*
		SDB raised	11393*	9085*	7547*	6455*	5643*	5004*	4419*	3864*	3408*	3032*	2718*
- 1.5 m	FRONT 	SDB supported	16697	13988	11965	10450	9276	8341	7583	6977	6423	5616	
		SDB raised	14769*	11528*	9438*	7930*	6818*	5894*	5132*	4529*	4035*	3642*	
	LATERAL 	SDB supported	16697	13988	11965	10450	9276	8329*	7461	6613*	5876*	5290*	
		SDB raised	11332*	9000*	7448*	6336*	5495*	4781*	4169*	3672*	3271*	2952*	
- 3.0 m	FRONT 	SDB supported	17200	14332	12312	10832	9585	8455	7325	6054			
		SDB raised	14886*	11470*	9266*	7683*	6519*	5656*	4978*	4442*			
	LATERAL 	SDB supported	17200	14332	12312	10832	9585	8455	7325	6054			
		SDB raised	11188*	8870*	7291*	6106*	5214*	4545*	4013*	3590*			
- 4.5 m	FRONT 	SDB supported	15161										
		SDB raised	14748*										
	LATERAL 	SDB supported	15161										
		SDB raised	11068*										

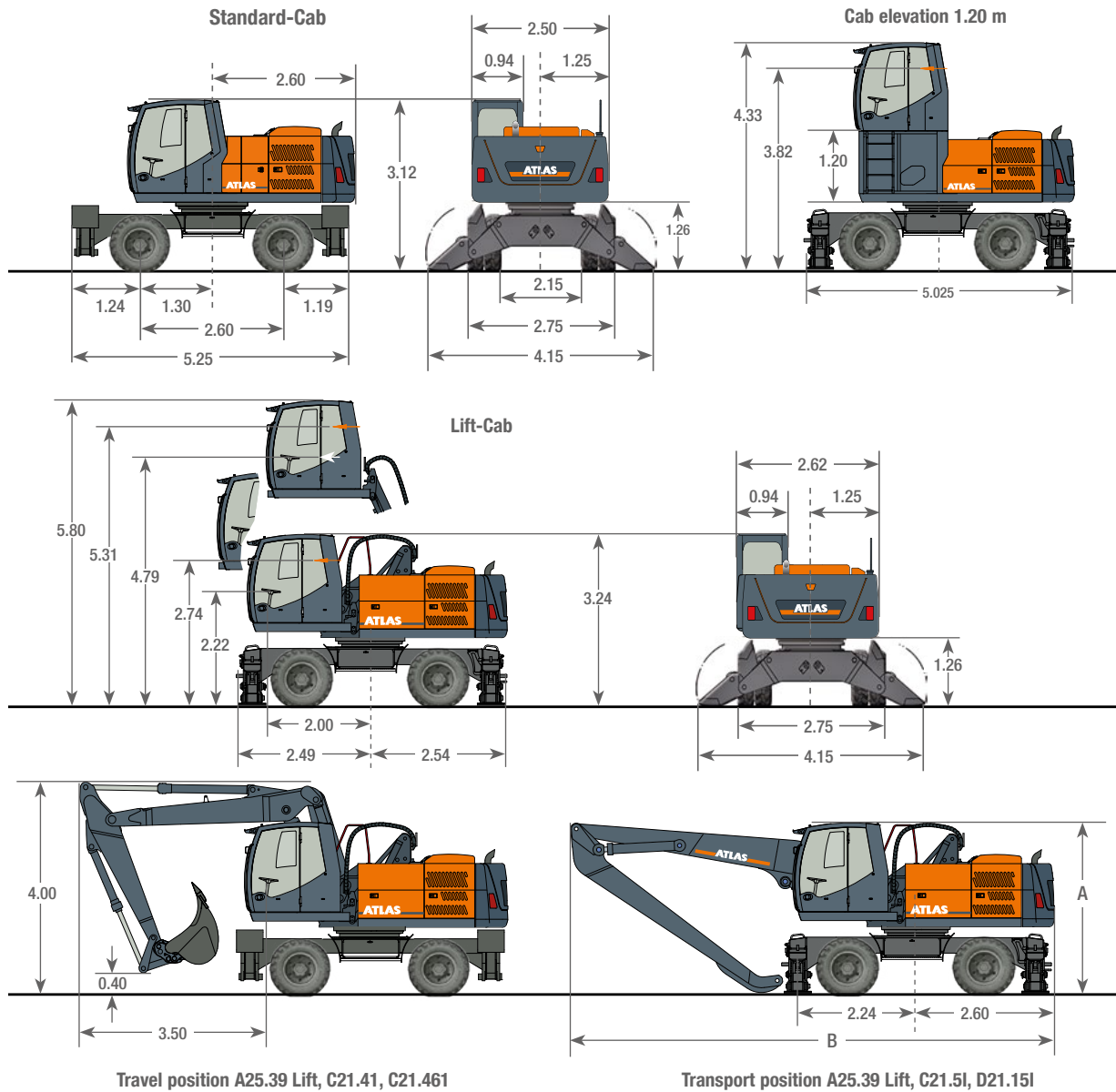
The specified max. loading capacities in kilogrammes (kg) include a stability of 25% or are calculated at 87% of the hydraulic lifting power, as per ISO10567. These values are applicable at the tip of the arm with optimum positioning of the corresponding arm system. Weights of attached load carrying accessories (grab, magnet, load hook, etc.) are not included with the load carrying values. \*Value limited due to excavator stability.

### Attachments



# DIMENSIONS 250MH

## Dimensions [m]



A	TRANSPORT HEIGHT	B	TRANSPORT LENGTH
	Loading boom 6.20 m with Stick 4.80 m.....3.24 m		Loading boom 6.20 with Stick 4.80 m.....9.20 m
	Loading boom 6.80 m with Stick 5.30 m .....3.24 m		Loading boom 6.80 with Stick 5.30 m.....9.80 m
	Adjustable Boom 1.95 m / 3,83 m with stick 2.65 m .....3.24 m		Adjustable Boom 1.95 m / 3,83 m with stick 2.65 m ...9.00 m

Further cabin versions on demand.

## **GANDERKESEE FACTORY**

Atlas GmbH  
Atlasstraße 6  
D-27777 Ganderkesee,  
Germany

Tel.: +49 (0) 4222 954 0  
Fax: +49 (0) 4222 954 220  
E-mail: [info@atlasgmbh.com](mailto:info@atlasgmbh.com)  
[www.atlasgmbh.com](http://www.atlasgmbh.com)



## **VECHTA FACTORY**

Atlas GmbH  
Theodor-Heuss-Str. 3  
D-49377 Vechta  
Germany

T: +49 (0) 4441 954 0  
F: +49 (0) 4441 954 299  
E-mail: [info@atlasgmbh.com](mailto:info@atlasgmbh.com)  
[www.atlasgmbh.com](http://www.atlasgmbh.com)



## **DELMENHORST FACTORY**

Atlas GmbH  
Stedinger Straße 324  
D-27751 Delmenhorst  
Germany

T: +49 (0) 4221 49 10  
F: +49 (0) 4221 49 14 43  
E-mail: [info@atlasgmbh.com](mailto:info@atlasgmbh.com)  
[www.atlasgmbh.com](http://www.atlasgmbh.com)

## **ATLAS CRANES UK LTD NATIONAL SALES & SERVICE FACILITY**

Wharfedale Road,  
Euroway Trading Est.  
Bradford, England BD4 6SL  
United Kingdom

T: +44 8444 99 66 88  
F: +44 1274 65 37 85  
E-mail: [atlasuk@atlasgmbh.com](mailto:atlasuk@atlasgmbh.com)  
[www.atlas-cranes.co.uk](http://www.atlas-cranes.co.uk)  
[www.atlasgmbh.com](http://www.atlasgmbh.com)

**ATLAS** SINCE 1919 **Material Handling  
Machine 250MH**



[www.atlasgmbh.com](http://www.atlasgmbh.com)

**ATLAS GmbH**  
EXCAVATORS  
Atlasstraße 6  
D-27777 Ganderkesee, Germany  
T: +49 (0) 4222 954 0  
Fax: +49 (0) 4222 954 220  
[info@atlasgmbh.com](mailto:info@atlasgmbh.com)